



EDD AND RDO COLLABORATION WITH TRIBES: STRATEGIES AND OPPORTUNITIES

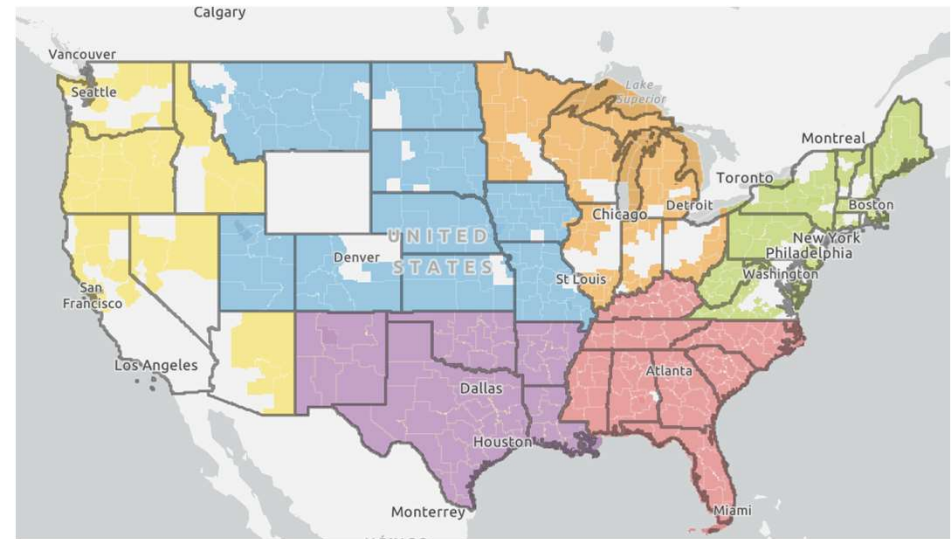
BIG WATER CONSULTING

BACKGROUND – EDD RELATIONSHIP TO TRIBES

- Economic Development Districts cover much of the country
- However, parallel funding streams for Comprehensive Economic Development Strategy (CEDS) planning through EDA keeps most processes separated
- Some EDDs explicitly include tribes in their membership
- Others may be unaware of tribes within their service area or unsure how to involve them respectfully

[Comprehensive Economic Development Strategy \(CEDS\) | U.S. Economic Development Administration \(eda.gov\)](#)

[Economic Development Districts | U.S. Economic Development Administration \(eda.gov\)](#)



NADO Economic Development District Map

BACKGROUND – TRIBES AS INTEGRAL ELEMENTS OF LOCAL, STATE AND REGIONAL PLANNING AND DEVELOPMENT EFFORTS

- Tribes have long and complex histories with the federal, state, and local governments
- Tribal sovereignty and self-determination are at the core of their identity
- While tribal independence and sovereignty are critical concepts, tribal reservations and their members exist within, and contribute to, regional economies
- People, money, water, wildlife, traffic, tourists, natural disasters flow across and often don't even acknowledge these borders
- The invisible political boundaries between tribal lands and non-tribal lands often serve as boundaries for data collection and planning efforts
- Tribal members live outside reservation boundaries and their host communities must embrace these community members and their needs and contributions
- Regional development strategies cannot be truly successful and equitable if they ignore these realities and create artificial voids within their maps, plans and planning processes



*National Congress of American Indians:
Tribal Nations & the United States*

BACKGROUND

- The activities of tribal governments, enterprises, and individuals contribute to regional economies.
- Many regional tribal organizations have quantified the economic impact of tribes on the broader economy

WASHINGTON TRIBES



Strong Tribal Economies Benefit All Washingtonians

Washington's 29 tribal governments generate:

Economic Activity

\$6.6 billion in gross state product	\$1.5 billion in wages and benefits	\$1.2 billion in state and local taxes
\$2.8 billion in purchasing power	\$4 out of \$5 of tribal revenue are from sovereignty	100% of tribal enterprise profits are government revenue

Jobs

37,371 direct employment	54,000 jobs trace back to tribes	72% non-Indian employees
------------------------------------	--	------------------------------------

1 in 86
Washington jobs

*Washington Indian Gaming Association
2022 Economic Impact Report*

EDA RESOURCE FOR TRIBAL ENGAGEMENT

Carolee Wenderoth

Confederated Salish & Kootenai Tribes

EDA Tribal Engagement Coordinator

cwenderoth1@eda.gov



EDD COMMUNITY OF PRACTICE CONTACT

Joanie Buckley

Oneida Nation

First Nations Development Institute
(part of EDD CoP)

joaniebuckley1@gmail.com





WHAT DOES
EDD/RDO AND TRIBAL
COLLABORATION LOOK
LIKE?

WHAT DOES EDD/RDO AND TRIBAL COLLABORATION LOOK LIKE?



CULTURAL AWARENESS, RESPECT FOR SOVEREIGNTY, AND KNOWLEDGE OF HISTORY

Unique Histories, Cultures, Cultural Norms and Relationships with Land/Environment (that often impact community economic development-related decision-making)

Sovereignty, Self-Governance and Self-Determination (incl. govt to govt relationships, re-emergence of tribal control and impacts on partnerships)

Varying Tribal Governance Structures and Impacts on Tribal Decision-Making

Federal Trust Responsibility, Trust Lands and Tribal Resources

Community Structures and Features (place-based family histories; unique timelines of private and managed housing, services and infrastructure; emphasis on sharing and caretaking)

Structure of Economies (largely rural/remote, robust “informal” economy, high gov’t employment as % of total, limited private business, TERO, unique federal contracting opportunities)

Data-Related Issues (concerns re: accuracy, transparency/access, and units of measurements, and growing use of IRBs as reflection of data sovereignty)

CULTURAL AWARENESS, RESPECT FOR SOVEREIGNTY, AND KNOWLEDGE OF HISTORY

Consult the tribe's web page for its description of its lands, culture, history, communities and programs

Primers for working with Native communities:

- Native Indian Health Board:
[National Indian Health Board | Working with Tribes Training \(nihb.org\)](http://nihb.org)
- Native Nations Institute's (University of Arizona) Native Know-How Seminar: Understanding How to Work & Partner with Native Nations:
[Native Know-How | Native Nations Institute \(arizona.edu\)](http://arizona.edu)
- Neighborworks America's Developing Successful Partnerships with Native Organizations Course:
[Training and Professional Development - NeighborWorks America](http://NeighborWorks America)
- Bureau of Indian Affairs' Online Primers, Economic Development at a Glance:
[Online Primers: Economic Development at a Glance | Indian Affairs \(bia.gov\)](http://bia.gov)



WHERE CAN
COLLABORATION START
AND WHERE CAN IT GO?

GETTING STARTED

- Do not let uncertainty about the appropriate process cause you to avoid building a relationship now
- Do your homework (e.g., cultural awareness, history, sovereignty, governance) before launching into a relationship with a tribe or Native community
- Do not wait until a process is already underway or a deadline is approaching to start a relationship
- Come from a position of respect, trust-building, equity, cultural and historical awareness, and govt-to-govt relationship (e.g., do not extend an invitation after all of the decision-making has been done)
- Plan to take your time and explore issues from the perspective of common interests, needs, strengths, challenges and opportunities (i.e., avoid poverty/dependency mindset)

GETTING STARTED

- Follow your existing organizational/govt to govt protocol for engagement (if one is already in place; if not, consider reviewing other model local, state and federal policies and protocols to help guide your organization)
 - White House: [Memorandum on Uniform Standards for Tribal Consultation | The White House](#)
 - Washington State: [Chapter 43.376 RCW: GOVERNMENT-TO-GOVERNMENT RELATIONSHIP WITH INDIAN TRIBES \(wa.gov\)](#)
 - San Juan Council of Governments (San Juan County, CA): [Consultation-Procedures-With-Native-American-Tribal-Governments---March-2018 \(sjcog.org\)](#)
- If uncertain about who to contact to begin a relationship or discuss a specific matter, call the tribal headquarters to inquire about the appropriate steps (e.g., a formal invitation to participate in an intergovernmental process, commission or program should flow through the Tribal Council or relevant governing body)
- If seeking informal contact to begin building a relationship, reach out to your tribal counterpart via phone or email and ask them what would be the appropriate way to begin that relationship and allow them to guide the process (also, seize the opportunity to introduce yourself at conferences and other events)

POSSIBLE SECTORS FOR COLLABORATION

- Roads
- Transportation
- Education
- Public Safety
- Hazard Mitigation and Emergency Management
- Environment and Natural Resources
- Infrastructure and Utilities
- Land Use/Zoning/Code Enforcement
- Housing (full spectrum from homelessness to PSH to Market Rate to Homeownership)
- Healthcare
- Workforce Development
- Business Development (all sizes)
- Energy/Green Building
- Tourism
- Hospitality and Entertainment
- Telecommunications and Technology

EDDS WITH TRIBAL PARTICIPATION

- North Central Washington Economic Development District
- Western Nevada Development District
- Region 9 Economic District of Southwest Colorado
- Bering Straight Development Council (ARDOR)
- Prince William Sound Economic Development District
- Northern Arizona Council of Governments



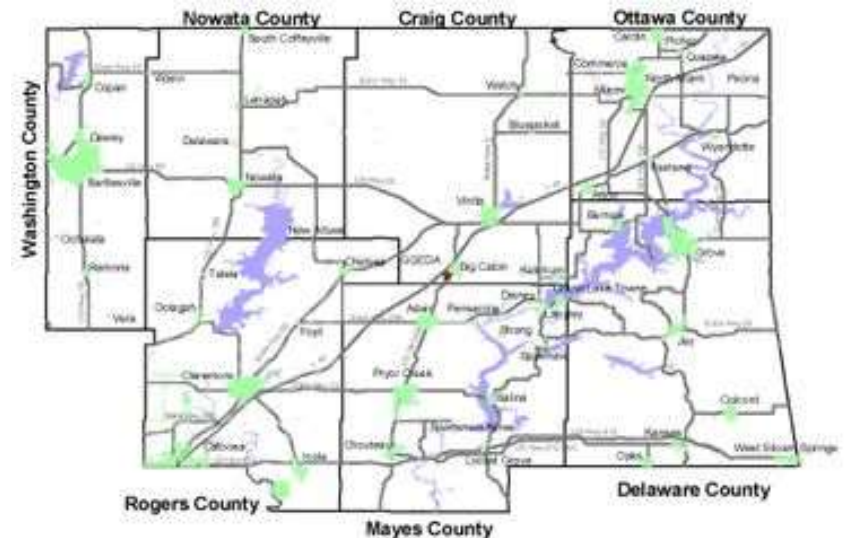
About Region 9 Economic Development District (region9edd.org)

GRAND GATEWAY EDD

Ongoing EDD Collaboration and Involvement with County Government and Tribal Governments

Joint Planning Areas Include:

- Transportation
- Economic Development
- Elder Services
- Infrastructure



<https://www.grandgateway.org/>

INTER-GOVERNMENTAL AGREEMENTS

- Arapahoe County and Northern Arapahoe Tribe: [Arapahoe County affirms partnership with the Northern Arapaho Tribe - Sentinel Colorado](#)
- City of Muskogee, OK: [1-7City-TribalRelations.pdf \(muskogeeonline.org\)](#)



Arapahoe County affirms partnership with the Northern Arapaho Tribe - Sentinel Colorado

COMPREHENSIVE COMMUNITY ECONOMIC DEVELOPMENT

- City of Riverton, Fremont County and Eastern Shoshone Tribe: Tribal business park plans move forward in Riverton | Wyoming Public Media
- City of Lacey and Nisqually Indian Tribe (Washington State): City Enters Cooperative Agreement with Nisqually Indian Tribe Connected to Development of New Urban Center - City of Lacey



Eastern Shoshone Business Park – Riverton, WY Business Park

CASINO-RELATED SERVICE AND IMPACT MITIGATION AGREEMENTS

- Yolo County and Yocha Dehe Wintun Nation (California):
Inter-Governmental Agreement related to Cache Creek Casino Resort



Cache Creek Casino Resort - Yocha Dehe

NATURAL RESOURCES

- Clallam County and Jamestown S'Klallam Tribe: [Agreement-with-Jamestown-S-Klallam-Tribe-Number-10051117JTPIC-PDF](#) (clallamcountywa.gov)
- State of California and Washoe Tribe: [Washoe Tribe signs agreement to co-manage lands with California State Parks - Keep Tahoe Blue](#)
- State of Oregon and 4 Tribes re: [Co-Management of Fish and Wildlife: 2 more tribes make historic co-management agreements with Oregon - OPB](#)



Washoe Tribe signs agreement to co-manage lands with California State Parks | TahoeDailyTribune.com

TRIBAL LAND RESTORATION

- City of Eureka (CA) Returns Island to Wiyot Tribe: [Eureka City Council approves agreement with Wiyot Tribe – Times-Standard](#)
- City of Prior Lake (MN) and Shakopee Mdewakanton Sioux Community: [City OKs tribe agreement with some objection | Prior Lake News | swnewsmedia.com](#)
- City of Barstow (CA) and Los Coyotes Band of Cahuilla and Cupeno Indians: [Barstow City Council amends casino agreement to remove tribe's development partner \(vvdailypress.com\)](#)



Eureka City Council approves agreement with Wiyot Tribe – Times-Standard

TRANSPORTATION

- State of Wisconsin and 11 Tribes in Wisconsin: PARTNERSHIP AGREEMENT Between Wisconsin's Eleven Federally Recognized Tribes And Wisconsin Division - Federal Highway Administration; And Wisconsin Department of Transportation And Bureau of Indian Affairs 2019 (wisconsindot.gov)



PUBLIC SAFETY

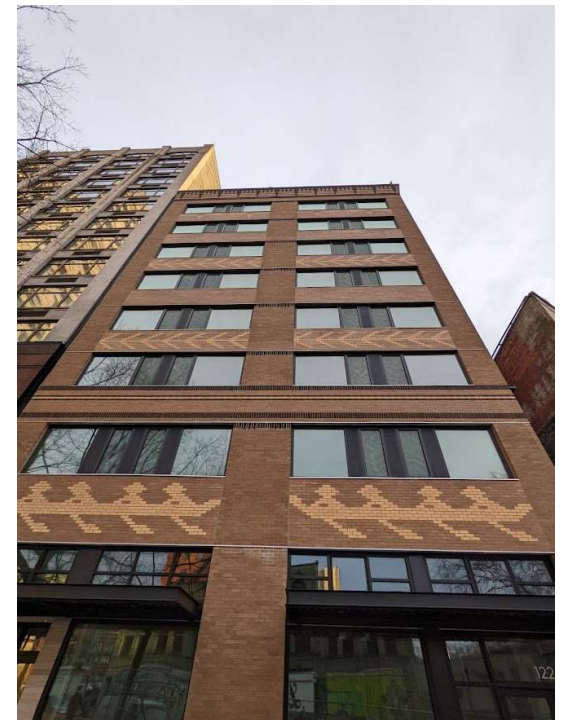
- White Earth Nation/Mahnomen County/Mahnomen City: Promoting Tribal and Community Cooperation | icma.org
- King County Sheriff's Office, City of Auburn Police Department and Muckleshoot Tribe: Muckleshoot Tribal Police Department - King County, Washington



Muckleshoot Indian Tribe Police Department

HOUSING DEVELOPMENT

- **Choice Neighborhoods Implementation Grant:**
[City of Tucson Awarded \\$50M HUD Neighborhood Implementation Grant City of Tucson \(tucsonaz.gov\)](#)
- **City of Seattle Invests in Permanent Supportive Housing Developed by Urban Native Nonprofit, Chief Seattle Club:**
<https://durkan.seattle.gov/2020/08/mayor-durkan-announces-bold-action-to-invest-in-600-apartments-for-homeless-individuals-in-response-to-covid-19-public-health-crisis/>



Chief Seattle Club

SMALL BUSINESS DEVELOPMENT

- SSBCI: Alaska SBDC at the University of Alaska will be implementing the capital and TA programs for a consortium of up to 129 Tribes, mostly Alaska Native Villages
- SSBCI: Salmon River Outpost – Arcata Economic Development Corporation and the ATNI SSBCI consortium partnered on this financing: [Gold Rush Outpost Now in Native Hands | News | North Coast Journal](#)



North Coast Journal

PLANNING & ZONING

- Memorandum of Understanding between the Tulalip Tribes and Snohomish County (Washington State) implemented in 2013; Collaborative engagement in long-term planning to reduce conflicts and achieve consistency between the Tribe's and County's respective comprehensive land use plans
- City of Palm Springs and Agua Caliente Band of Cahuilla Indians (California): Agua Caliente Band of Cahuilla Indians | City of Palm Springs (palmspringsca.gov)



MEMORANDUM OF UNDERSTANDING BETWEEN THE TULALIP TRIBES AND SNOHOMISH COUNTY ESTABLISHING PROCESS FOR COORDINATED LONG-RANGE PLANNING & INFORMATION SHARING

This Memorandum of Understanding ("MOU") is made by and between the Tulalip Tribes, a federally recognized Indian tribe, and Snohomish County, a political subdivision of the State of Washington. The Tulalip Tribes and Snohomish County (collectively referred to as "Parties" or "governments") hereby acknowledge and agree as follows:

RECITALS



1. The Tulalip Tribes are the successors in interest to the Snohomish, Snoqualmie, Skykomish and other tribes and bands, who were signatory to the 1855 Treaty of Point Elliott. In the Treaty, the Tulalip Tribes reserved the Tulalip Indian Reservation ("Tulalip Reservation") as a permanent homeland in exchange for ceding millions of acres of land to the United States.
2. The State of Washington was established and admitted into the United States in 1889. Snohomish County is a political subdivision of the State of Washington.
3. The long history of conflicting federal policies regarding reserved Indian lands has resulted in a checkerboarding of land ownership within the Tulalip Reservation, which includes Tribal (trust and restricted fee), tribal member (trust and fee), and non-Tribal (fee) owned lands. However, the original boundaries of the Tulalip Reservation established under the Executive Order of 1873, have never been changed or diminished.
4. The Tulalip Tribes exercise governmental authority over its Reservation lands, people and reserved treaty resources in accordance with the Tulalip Constitution and the Tulalip Tribal codes.

MORE EXAMPLES OF POTENTIAL COLLABORATION AND PARTNERSHIP

- City of Seattle Tribal Nations Summit 2023: [City of Seattle Tribal Nations Summit Summary Report - July 2023](#)
- Seattle and Puyallup Tribe Agreement to Make Tribe Official Legacy Supporter of FIFA World Cup 26: [Seattle and Puyallup Tribe of Indians announce World Cup agreement \(fifa.com\)](#)



City of Seattle



WHAT FUNDING
SOURCES AND
PROGRAMS SUPPORT
COLLABORATIVE
PROCESSES?

AGENCIES AND PROGRAMS

- Department of Commerce / EDA
 - [EDA Planning and Local Technical Assistance Program](#) for, among other groups, district organizations and Indian Tribes
- United States Department of Agriculture (USDA)
 - [Rural Community Development Initiative](#) Grants to help non-profit housing and community development organizations, low-income rural communities and federally recognized tribes support housing, community facilities and community and economic development projects in rural areas
 - [Rural Placemaking](#) Innovation Challenge to foster placemaking in rural communities
 - [Community Facilities Programs](#) for public bodies, nonprofits, and federally recognized Tribes
 - Rural Development Broadband: [ReConnect Loan and Grant Program](#)
- Community Development Financial Institution Fund (CDFI Fund)
 - [New Markets Tax Credit \(NMTC\)](#) Program attracts private investment to distressed communities
 - [Native American CDFI Assistance Program \(NACA\)](#) to increase NMTC investments in Native Areas

AGENCIES AND PROGRAMS

- Federal Emergency Management Agency (FEMA)
 - [Public Assistance Program](#) provides disaster support for tribes, territories, and state governments
- Environmental Protection Agency (EPA)
 - Competitive [Brownfield Assessment Grant](#) and [Brownfield Multipurpose Grant](#) for tribes, state governments, and nonprofits
 - [Drinking Water State Revolving Fund \(DWSRF\)](#) formula grant for states, territories, and tribes
- Department of Energy (DOE)
 - [Competitive](#) and [Formula](#) based Energy Efficiency and Conservation Block Grant (EECBG) for tribes and state governments
 - [Grid Resilience State/Tribal Formula Grant Program](#) for states, territories, and tribes

AGENCIES AND PROGRAMS

- Department of Transportation (DOT)
 - Competitive [Thriving Communities Program](#) provides technical assistance for states, regions, and tribes
- [Health & Human Services \(HHS\)](#) / [Indian Health Services \(IHS\)](#) / [Centers for Disease Control \(CDC\)](#)
- National Telecommunications and Information Administration (NTIA)
 - [Middle Mile Broadband Infrastructure Grant Program](#) for tribes, state governments, and nonprofits
- Internal Revenue Service (IRS)
 - [Opportunity Zones](#) spur economic growth and job creation in low-income communities
- Department of the Treasury
 - Low-Income Housing Tax Credit Program (LIHTC Program)
 - State Small Business Credit Initiative (SSBCI)

DEDICATED COMMUNITY OF PRACTICE FOR INDIGENOUS ECONOMIC DEVELOPMENT

EVENTS STARTING
IN JANUARY 2024

SIGN UP FOR THE COMMUNITY OF
PRACTICE [HERE](#):

Questions can be directed to:
IndigenousCoP@bigwaterconsulting.net



Questions?

Big Water Consulting

Kevin Klingbeil
kevin@bigwaterconsulting.net

